

## AKUSTIC 8-18

Prefabricated radiant gypsum acoustic panels for suspended ceilings and walls system with excellent ACOUSTIC INSULATION. It consists of a double plasterboard sheet with thickness 12.5 mm, circular drilling and dust filter placed on the rear sheet. The hydraulic circuit between the sheets consists of a snail layout with PE-XC pipes Ø 8x1 mm with oxygen-barrier up to 5 cm pipe spacing.



### APPLICATION FIELD

INDUSTRIAL SECTOR

TERTIARY SECTOR

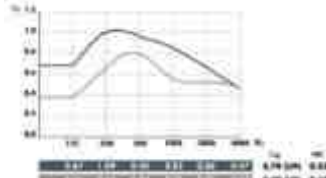
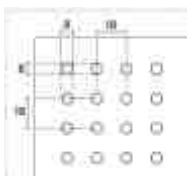
### TYPE OF LYING

SUSPENDED CEILING

WALL

### DATE AND TOLERANCES

<b>PLASTERBOARD TYPE</b>	Decorative plasterboard sheet with circular drilling perfect for painting with a roller. The version with ACTIVE AIR technology, that provides air cleaning systems up to 70% of indoor pollutants (formaldehyde and aldehydes), is available.
<b>PANEL THICKNESS</b>	25 mm
<b>MOISTURE RESISTANCE</b>	RH 70
<b>SHOCK RESISTANCE</b>	According to DIN 18032-3
<b>THERMAL CONDUCTIVITY (<math>\lambda_0</math>)</b>	w/mk 0,25
<b>PIPE DIAMETER</b>	8 mm
<b>PIPE MATERIAL</b>	PE-XC with oxygen-barrier
<b>PIPE SPACING</b>	50 mm
<b>PIPE LAYOUT</b>	snail
<b>CLASS OF REACTION TO FIRE</b>	A2-s1,d0(B) in accordance with EN 13501-1
<b>LONGITUDINAL EDGE</b>	Straight
<b>LEADING EDGE</b>	Straight
<b>TOLERANCE</b>	± 0,5
<b>OPERATING TEMPERATURE</b>	Heating: 27-32 °C Cooling: 15-20 °C



■ Plenum 200 mm mineral wool 50 mm  
 ■ Plenum 200 mm without mineral wool

### TECHNICAL DATA

Length (mm)	Width (mm)	Thickness (mm)	Weight (kg)	Circuit length (mt)	Water content (kg)	Packages (sqm)
1998	1188	25	20	40	1.7	100,80